

## Meeting Agenda – Northparkes Community Consultative Committee Meeting

<b>Date &amp; Time</b>	Monday 10 July 2023 – 4.00 – 5.00 pm
<b>Venue</b>	Parkes Shire Chambers
<b>Attendees</b>	Chair: David Johnson Jianjun Tian, Stacey Kelly, Chris Higgins, Laura Mansell, Brooke Plunkett, Chloe Allan, Cr Brian Mattiske, Geoff Rice, Sandra Parker, Phil Moss, Cr Bill Jayet, Margarette Applebee
<b>Apologies</b>	Cr Ken Keith, Cr Steve Karaitiana, Scott Bickett, Cr Glenn Wilson, Cr Jacob Cass, Andrew Rice.
<b>Unconfirmed</b>	

<b>Agenda Item</b>	<b>Description</b>
1.	Acknowledgement of Country
2.	Welcome and Apologies
3.	Declaration of Precautionary and Other Interest
4.	Business arising from previous minutes – response to issues raised or provision of additional information requests.
5.	Correspondence
6.	CMOC-Northparkes Mines reports and overview of activities: <ul style="list-style-type: none"> <li>• Business Update</li> <li>• Approvals Status</li> <li>• Environmental and Farming</li> <li>• Community Update</li> </ul>
7.	Other agenda items
8.	General business
9.	Determine date of next meeting
10.	Close

## Minutes of Meeting

### 1. Attendees and apologies confirmed

Chair: David Johnson

Attendees: Jianjun Tian, Stacey Kelly, Chris Higgins, Laura Mansell, Cr Brian Mattiske, Sandra Parker, Phil Moss, Cr Bill Jayet, Margarette Applebee, Brooke Plunkett, Chloe Allan

Apologies: Cr Ken Keith, Cr Glenn Wilson, Cr Jacob Cass, Cr Steve Karatiana, Geoff Rice, Andrew Rice, Scott Bickett

### 2. Acknowledgment of Country by Chair David Johnson

### 3. Declarations of Pecuniary interests

- a. No declarations made

### 4. Correspondence

- a. No external correspondence received during the period.
- b. Guideline shared with committee last year has now been approved and is on the website. Guidelines here - [Community consultative committee guideline \(nsw.gov.au\)](https://nsw.gov.au)
- c. Transition period required to look at terms of reference, decisions will be required for this group to make. Correspondence will follow when terms of reference review is required.
- d. Forms have been updated and will be circulated for the group to fill and complete, including code of conduct.

### 5. Business Arising from Previous Minutes

- a. No comments or requests for change
- b. Minutes were lodged as March
- c. No follow up actions required

### 6. Northparkes Update

- a. Zero Harm performance

## Zero Harm Performance

KPI	Target	Result YTD
Number of Total Recordable Injuries	12	7
Total Recordable Injury Rate	10	11.53
Number of Lost Time Injuries	4	4
Reportable Environmental Incidents	0	0
Community Complaints	0	0

#### Injuries

- 7 Recordable Injuries YTD
- 60% Contractors
- 40% Employees
- 80% >40 years of age
- Majority routine work
- Total 21 shifts lost



#### Updates

- Operational preparation for E31 & E31N project.
- All workers have completed their face2face re-induction.
- Occupational hygienist and occupational physician site visit.
- Risk assessments continue for critical (fatal) risks.
- Legal briefings on legislative Work, Health and Safety requirements.
- HSE support for the Winder Shut Down.
- NPM leaders finished their Zero Incident Program (safety cultural program)

- In comparison to nearby mine sites Northparkes Mine site is similar if not better than other nearby mine sites.

- When we look at injuries, and the analysis of the injuries, the majority of the injuries are resulting from routine tasks.
- In addition to strategies to improve our safety performance across site we are also looking at strategies to attract a younger workforce.
- In total we have lost 21 shifts YTD, which is quite positive.

b. 2023 Strategy

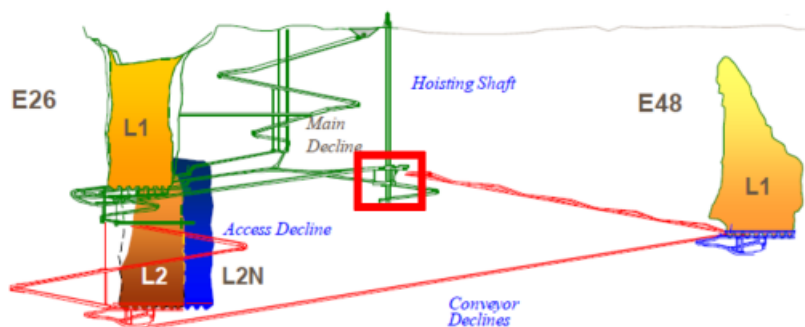


- We are tracking well against our strategic plan, the above map depicts our plan for the year

c. Unplanned Winder Shaft Shut Down

## Unplanned Winder Shaft Shut Down

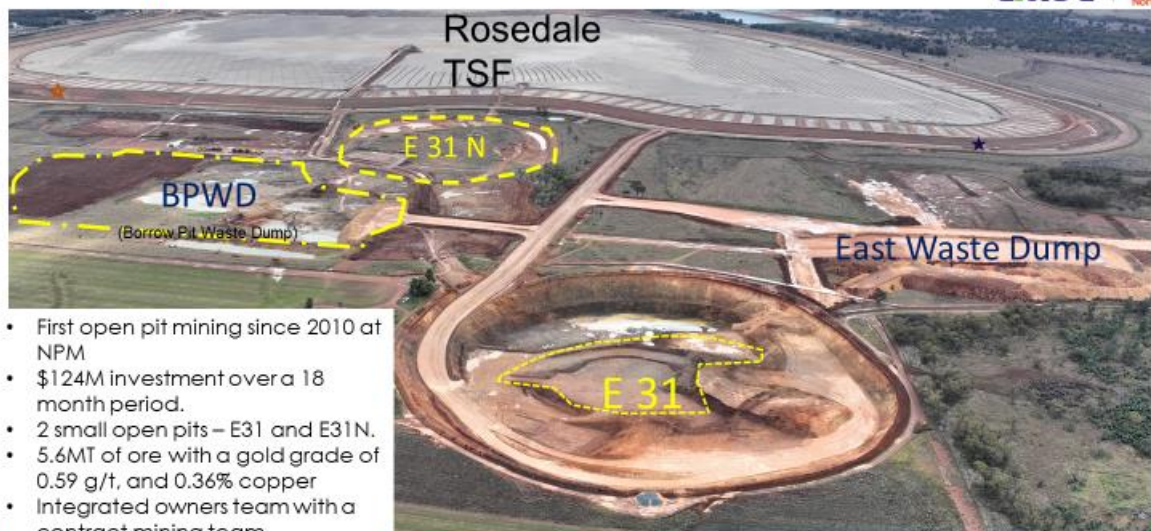
- Hoisting Shaft (winder) is responsible for the removal of ore from underground to surface.
- Identified the lower shaft steelwork had deteriorated to a point where decision was taken to remediate the steelwork to ensure safety of our people, production and the asset.
- Unplanned shut down of ~20 days with no production from UG.
- Ore processing still operating.
- Impacts to the 2023 production plan are still being assessed.



- The unplanned shutdown is going well.
- Essential work is required to remediate the lower shaft steel work. Work is expected to take around 20 days.
- **Question:** Cr Bill Jayet asked about the worker who was flown to Sydney earlier this year, and whether they are ok and what was the incident?
- **Answer:** in early April during a shutdown a worker took an IBC (Intermediate Bulk Container) from a waste area, and began to cut the top off it, the sparks from angle grinder and the residue in the IBC ignited and threw the worker around 4m. The worker sustained serious injuries and was evacuated by helicopter to Sydney for treatment and has received ongoing treatment in Sydney and Orange. A second worker who attended to the injured worker sustained burns to their fingers.

d. E31 Open Pits

## E31 Open Pits



- First open pit mining since 2010 at NPM
- \$124M investment over a 18 month period.
- 2 small open pits – E31 and E31N.
- 5.6MT of ore with a gold grade of 0.59 g/t, and 0.36% copper
- Integrated owners team with a contract mining team.
- Mining Contract in final stages of approval.

- Production has commenced and will ramp up this month.

e. E22 Block Cave Feasibility Study

- Capital has been approved to complete the feasibility study for a block cave at E22 which will be the next major ore body for Northparkes
- **Question:** Cr Bill Jayet raised a question whether there has been any media coverage for this project.
- **Answer:** Stacey Kelly responded to advise that there has been no media coverage.



## E22 Block Cave Feasibility Study

### Context

- E22 deposit next backbone ore body with 40Mt of ore at 0.53% Cu and 0.40g/t Au.
- Significant investment in the future of Northparkes.

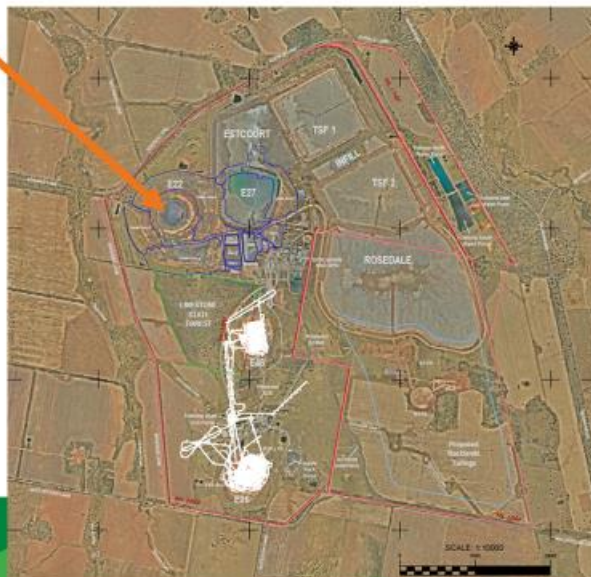
### Current Status

- Capital budget approved for Feasibility Study
- Recruitment completed of study team
- Feasibility study completed by December 2023

### Execution – Q1 2024

- Portal Jan-24 – March 24
- Development March 24

Northparkes Mines  
A century of mining together



f. Exploration update

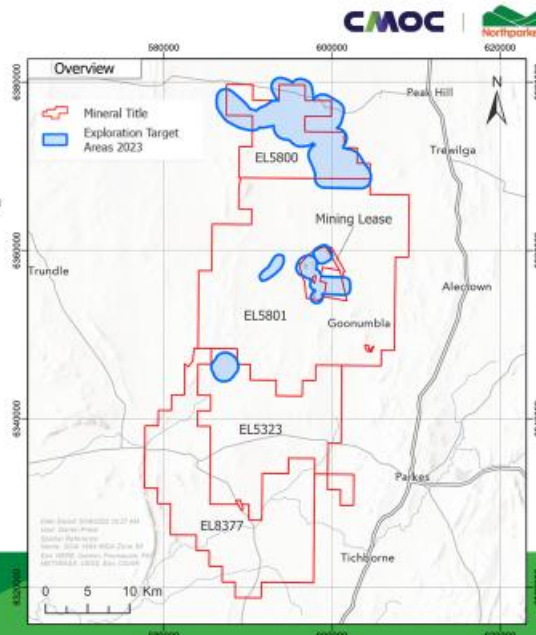
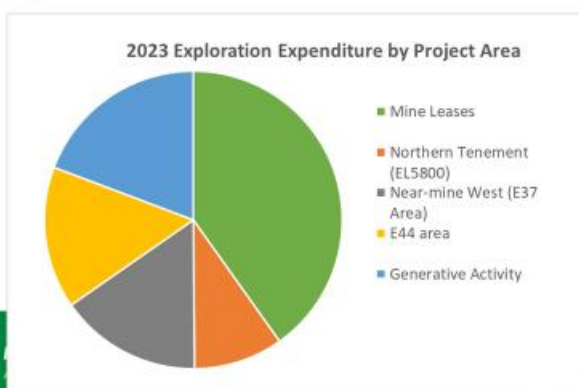
## Exploration Update 2023

Exploration budget increased by 42%

Four areas of focus

- Mine Leases
- E37 Area (near mine)
- E44 Area
- EL5800 Area

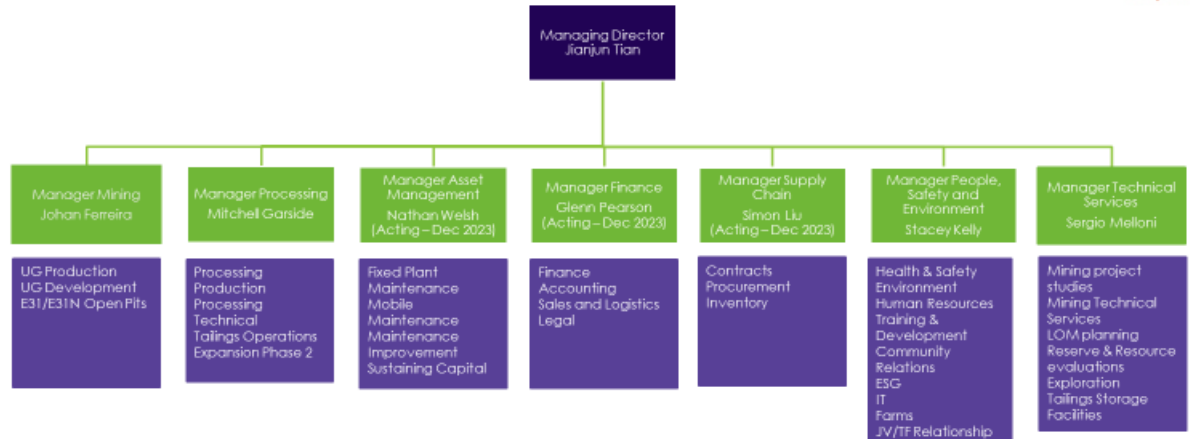
**Move from Brownfields/Mine Leases to Greenfields activities on Exploration Licences**



- The exploration program is increasing in 2023.

## g. Northparkes Leadership team update

## Northparkes Leadership Team



Northparkes Mines  
A century of mining together

**Action:** Share information of Johan Ferreira, who has now taken on the Manager Mining

- <https://www.northparkes.com/about/our-leaders>

## h. Attraction and retention

## Attraction & Retention



In March 2023 we introduced Northparkes Savings. Employees are able to access a wide range of discounts and cashback options at hundreds of retailers.



Recently members of our team attended the NSW Mining Careers Dinners. Meeting with students and their families to share information on the great opportunities, careers and lifestyles available when working in the mining and resources community.



Effective January 1<sup>st</sup> 2023 an increase to employee allowances was implemented and a 38 hour week and 9 day fortnight.



Northparkes Mines  
A century of mining together

Updated recruitment marketing campaign



- Our voluntary turn over rate is stabilising
- **Question** from Cr Bill Jayet, What is the biggest draw back you are finding for people to work at the mines?
- **Answer** from Stacey Kelly, housing and child care, access to medical services and support.

- Comments from Jianjun Tian, we are a residential mine, we are encouraging our people to participate in many major conferences in the mining industry and establishing Northparkes as a leader in the industry.
- **Question** from Cr Bill Jayet, Have Northparkes considered putting money into building more homes?
- **Answer** from Stacey Kelly: No we have not at this stage.

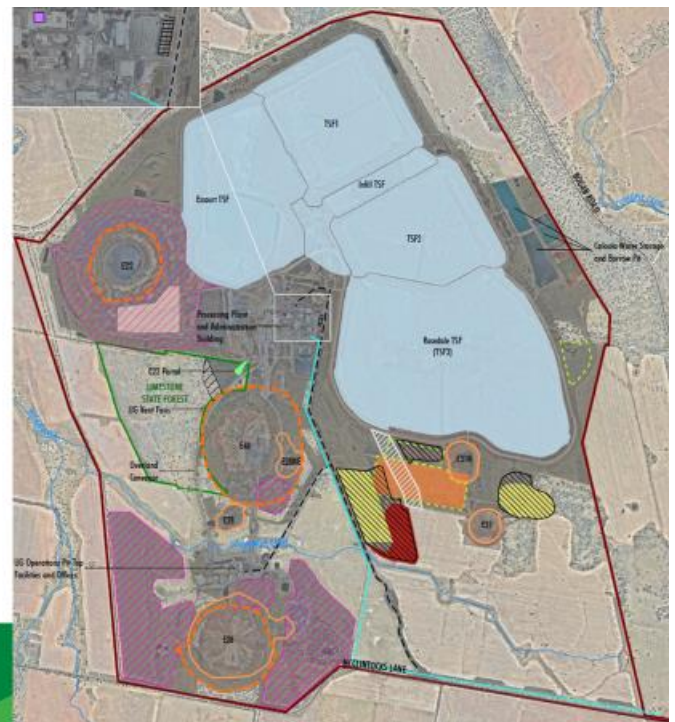
## 7. Environmental Approvals: Current Plan

- a. Modification 10
  - Information shared with committee relating to Modification 10 which has been submitted for approval.
  - As with all applications for modifications we are required to go through a public exhibition period.
  - Concerns relating to dust and bio solids raised by community, and additional work is being undertaken to work through these

### Modification 10

**Modification 10** submitted in May including:

- New E22 vent fan in Waste Dump 4
- New warehouse shed and new laboratory shed
- Cyclone tailings construction for Rosedale
- Larger waste rock dumps for E31s open cut mining
- Use E31 borrow pits as water storages
- Use of biosolids for rehabilitation on TSFs
- Importation of external ore samples
- Dispose large tyres in rock or tailings emplacements



Northparkes Mines  
A century of mining together



## Modification 10



Public exhibition period finished in late June, however we are still waiting for the EPA submission before we can respond to the Dept. of Planning

Summary of submissions from regulators and community so far include:

### Community (submission made directly to Northparkes)

- Dust and smell from the bio solids
- Enlargement of the contaminated water storage adjacent to Goonumbra Creek
- Long term impact of burying tyres on site.
- Starting construction of Rocklands tailings dam
- Construction noise in the E31/Rocklands area

### Regulators (submissions made via regulator portal)

- Rocklands embankment to meet standards for construction considering nearby mining
- Rosedale cyclone sand meets final landform industry guidelines
- Works within waterfront land are done within guideline requirements
- Ensure water, sediment and erosion control plans are updated
- Water entitlements are adequate to address maximum water take
- Buried tyres at an appropriate depth and included in final landform documents

Northparkes Mines  
A century of mining together

- As with all applications for modifications we are required to go through a public exhibition period.

### b. Modification 11

## Modification 11: longer timeframe

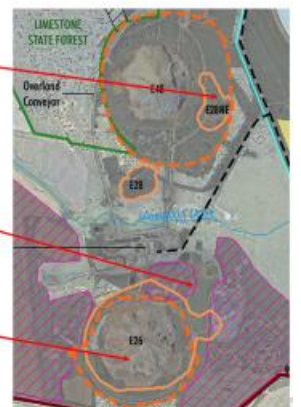
The details of Modification 11 are still being determined.

Current plan for Modification 11 is:

- Larger E31 void, if required (yellow shape top right image)
- E31 and E31N in-pit tailings (green open cuts top right image)
- Larger E28NE void
- New 'Altona' water storage (purple area bottom image)
- Cyclone tailings construction for Infill TSF
- New block caves such as MJH and other E26 levels
- Extend the approved life of mine
- Increase the throughput
- Rocklands TSF half footprint
- Increase the approved height of the Rosedale TSFs



- Increased size of E28NE void and associated stockpiles.
- Development of the MJH Block Cave adjacent to E26 to access additional reserves.
- Development of additional lifts, sublevels and/or caves for E26 (subject to ongoing investigation).



Northparkes Mines  
A century of mining together



- Information relating to Modification 11 shared with committee.
- Modification 11 is a longer time frame and the details are still being determined. Details of the proposed modification 11 will be shared with the committee as they are confirmed.
- Work is being undertaken to determine the possible height we could increase to for the TSFs, including design and consultation.



## c. Proposed SSD

## Proposed SSD: E44 Rocklands plus plus plus



- E44 open cut and haulage route(s)
- Modifications to the mill process (Module 3)
- Increase the annual throughput (>12Mtpa) rate to be confirmed
- Remainder of Rocklands TSF
- Increased approved TSF height of the existing TSFs
- Additional topsoil storage locations
- Extension of Goonumbla Siding to handle longer trains
- Extended life of mine
- Any components of Mod 11 that get pushed out (i.e. MJH)



Northparkes Mines  
A century of mining together

- Any components that we can not include in our modifications will be included in the next approval.
- Chris Higgins advised that tours of E44 are available to our CCC.

## d. Environmental performance and risks

i. **Action:** Link to our monitoring data on our website

1. <https://www.northparkes.com/wp-content/uploads/2023/05/mac190810rp16-1.pdf>
2. <https://www.northparkes.com/wp-content/uploads/2023/07/attended-noise-monitoring-q2-2023.pdf>

## Environmental Performance



	2016 Actual	2017 Actual	2018 Actual	2019 Actual	2020 Actual	2021 Actual	2022 Actual	2023 YTD
Reportable environmental incidents	7	1	0	2	0	0	0	0
Non-compliances	7	2	0	3	0	0	0	0

Northparkes Mines  
A century of mining together

## Northparkes Enviro 2023 KPIs



3 of the 5 zero harm site wide KPIs for 2023 relate to environmental performance

KPI	Measure	2023 YTD
Serious Environmental Incident	End of year performance points deducted for each serious environmental incident	0
Effectiveness of our HSE Management System	Score of 3 or more from Sept Audit. Score above 3 increases points to our end of year performance and score below 3 deducts points.	Audit: Sept
Copper Mark Program Energy Efficiency Audit	Carry out assessments and audits, determine actions and commence implementation	Cu Mark: July Energy Audit: May

Northparkes Mines  
A century of mining together

- There is increasing emphasis on ESG, and in response we have more environmental KPIs.
- Copper Mark Program: it is a detailed process that looks at all aspects of our business. Information here - <https://coppermark.org/>
- Energy efficiency audit: there are a range of things that we are looking at to increase the efficiency of our energy consumption.

## Most significant Enviro risks in 2023



- Environmental risks are reviewed annually
- In 2023 there are changes in the most significant risks

### 2023 Top Four Environmental Risks

1. Noise from E31's open cut surface mining, mainly night-time and early mornings
2. Dust from tailings facilities
3. Gaining approvals on time
4. Tailings embankment or pipeline failure

Northparkes Mines  
A century of mining together

## Noise: E31's Open Cut Mining

To date, the mining has been stripping waste material for Rosedale TSF construction.



- All blasts have met overpressure and ground vibration criteria limits
- Started working with closest neighbours on noise controls
- Operations teams aware of noise risks

24hr open cut mining is expected in the next two months

- Noise at night is considered to be the primary risk, esp. in winter
- Working with the contractor to ensure risks are controlled



Northparkes Mines  
A century of mining together

- Compliance allows for a certain amount of noise, however in foggy or cloudy periods we will find that noise will not dissipate as much as a clear night, and now that we are moving into 24 hour mining our noise is likely to impact our neighbours more.

## Dust from Tailings Facilities

Increased risk during construction phases, such as Rosedale Stage 3 (just completed)



- Dust in December 2022 was worse than normal due to ripping unable to be done on Rosedale
- Rosedale continued to dry out over summer and ripping was able to be carried out
- Increased interest on rainwater impacts

### EPA to probe Cadia gold mine after heavy metals found in residents' blood, rainwater

ABC Central West / By Joanna Woodburn and Miranda Hambrett  
Posted Mon 22 May 2023 at 9:07am, updated Mon 22 May 2023 at 1:50pm

### Cadia Valley Operations admits to dust pollution at NSW gold mine amid health concerns

ABC Central West / By Joanna Woodburn and Hugh Poyser  
Posted Thu 9 Jul 2023 at 11:36am



Northparkes Mines  
A century of mining together

- Increased concern from neighbours around dust from tailings facilities
- Local news outlets have covered stories relating to dust which may be increasing the concern of our community
- Higher walls also increase the risk of wind as winds become stronger with height.



## Tailings embankment or pipeline failure



**Tailings spills attract media, regulator and community attention**

1. Highest risk areas are the pipelines on the outer parts of our operations
2. Recent TSF2 embankment unloading works reduce the risks for failure



Northparkes Mines  
A century of mining together

e. Copper Mark

## Copper Mark Gap Assessment



- ESG has been rated as the highest corporate risk for mining companies for the past few years
- Responsible Production: International framework for mines to prove responsible mining to investors
- Highest level of governance within the copper mining industry
- Overseen by an independent board, supported by a range of organisations like the International Copper Association



RESPONSIBLY  
PRODUCED  
COPPER

Northparkes Mines  
A century of mining together



## Copper Mark Gap Assessment



- The 32 criteria cover the ESG (Enviro, Social & Governance) considerations
- BHP Olympic Dam is the only Australian mine to receive The Copper Mark
- Cadia have committed, but not received The Copper Mark yet.

**Northparkes will do a gap assessment in July 2023 and work through required improvements and plan for assessment in the future**

1. Legal Compliance	2. Business Integrity	3. Stakeholder Engagement	4. Business Relationships	5. Child Labor	6. Forced labor	7. Freedom of Association and Collective Bargaining	8. Discrimination
9. Gender Equality	10. Working Hours	11. Remuneration	12. Occupational Health and Safety	13. Grievance mechanism	14. Environmental Risk Management	15. Greenhouse Gas (GHG) Emissions	16. Energy Consumption
17. Freshwater Management and Conservation	18. Waste Management	19. Tailings Management	20. Pollution	21. Biodiversity and Protected Areas	22. Mine Closure and Reclamation	23. Community Health and Safety	24. Community Development
25. Artisanal and Small-Scale Mining	26. Human Rights	27. Security and Human Rights	28. Indigenous Peoples' Rights	29. Land Acquisition and Resettlement	30. Cultural Heritage	31. Due Diligence in Mineral Supply Chains	32. Transparency and Disclosure

Northparkes Mines  
A century of mining together

- f. Farm Update and introduction to Damian Byrne

## Farm Update



### Damian Byrne – Farm Specialist

Damian joins the Environment Team, and will be responsible for our farming operations at Northparkes.

Damian grew up in the area on a mixed farming property near Cookamidgera. After completing a Bachelor of Agricultural Science at Charles Sturt University, he returned to the Parkes area to manage the family farms. In 2007, he completed a Diploma of Education and moved to London, UK for 2 years as a Science teacher. Since returning in 2010, he has been teaching Agriculture, Science and Primary Industries at Forbes High School. He bought his own farm in 2014 in the Gunningbland area and runs a small lamb breeding enterprise with his wife Alex and 3 daughters.

Northparkes Mines  
A century of mining together

- We continue to lease our farms in the Forbes region and are continuing with our share farm agreement

## 8. Community Engagement

### a. Community performance and activities

## Community Performance



	2017 Actual	2018 Actual	2019 Actual	2020 Actual	2021 Actual	2022 Actual	2023 YTD
<b>Community Complaints</b>	1	0	1	0	0	1	0
<b>Concerns raised and currently managed by Northparkes</b>							
<ul style="list-style-type: none"> <li>Vibration at neighbours residence</li> </ul>							

Northparkes Mines  
A century of mining together

- Vibration has been detected at a neighbour's residence. The source has been identified as a screen component of the operations. Work is ongoing with consultants to rectify this issue.

## Community Engagement Projects



Northparkes Mines  
A century of mining together

- Family Day was held on April, 29 with over 400 employees and their families coming to site to tour our operations, and celebrate where we work each day.

- The Life Education program has been supported by Northparkes for a number of years which aims at educating primary school aged children about health, safety and wellness.
- The Community Investment Program for the first half of 2022 has concluded, alongside the first round of sports grants.
- The Community Investment Program is a joint initiative of Northparkes and Triple Flag Precious Metals. \$10,000 per round is contributed by Triple Flag and \$40,000 per round is contributed by Northparkes. There are two rounds each year.
- The Sports Grants program is a joint initiative between Northparkes and Parkes Shire Council and Parkes Sports Council, \$30,000 is contributed by Northparkes annually.

## 2023 Activities



Even after many years of meetings and tours, our neighbours understanding of the Mine Site is deemed not adequate

- In 2023 the nearest neighbours have been invited for private family tours
- Two families have completed the tours so far and more are being organised
- Families are taken around all of the surface areas of the mine site
- Feedback so far has been very positive.



Northparkes Mines  
A century of mining together

## 2023 Activities



Frontline Ball 2023



Local Agricultural shows



Community Investment Program H2

Northparkes Mines  
A century of mining together

### 9. Questions and close out

- a. **Next meeting date: 9<sup>th</sup> of October**, same time, Monday at 4 pm suits group. Check in closer to the proposed date.