

Northparkes E44 Rocklands Project

PROJECT INFORMATION SHEET

ISSUE#1 JULY 2021

CMOC

Northparkes

This information sheet provides an introduction to the proposed **Northparkes E44 Rocklands Project** (the Project) and outlines the development application process and how you can be involved.

Overview

In alignment with CMOC-Northparkes (Northparkes) vision for 'a century of mining together', Northparkes have identified a resource (E44) containing favourable gold grade approximately 13km southwest of our existing operations. Northparkes proposes to mine E44 using open cut methods, with the ore to supplement our existing operations.

The Project also includes the development of a new tailings storage facility (TSF) to be known as the Rocklands TSF, adjacent to our existing operations. Combined, these components form the Northparkes E44 Rocklands Project. Northparkes is proud to have been a residential operation for the past 27 years and strives to continue to be locally embedded within the Parkes Shire.

The Project is considered a State Significant Development (SSD) and if approved, would see the commencement of mining at the E44 Open Cut in 2024, construction of the Rocklands TSF in 2025 and continued operations at Northparkes until 2032.

Consultation with the Project's near neighbours and local community is central to the development of the Project. Northparkes seeks community input throughout all stages of the Project to ensure that our plans incorporate your feedback.

Key components of the Northparkes E44 Rocklands Project



The development of a satellite open cut mine (E44) and associated infrastructure, approximately 13km southwest of our existing operations.



Haulage of ore from the E44 Open Cut to the Northparkes Mine Site via one of two public road route options:

1

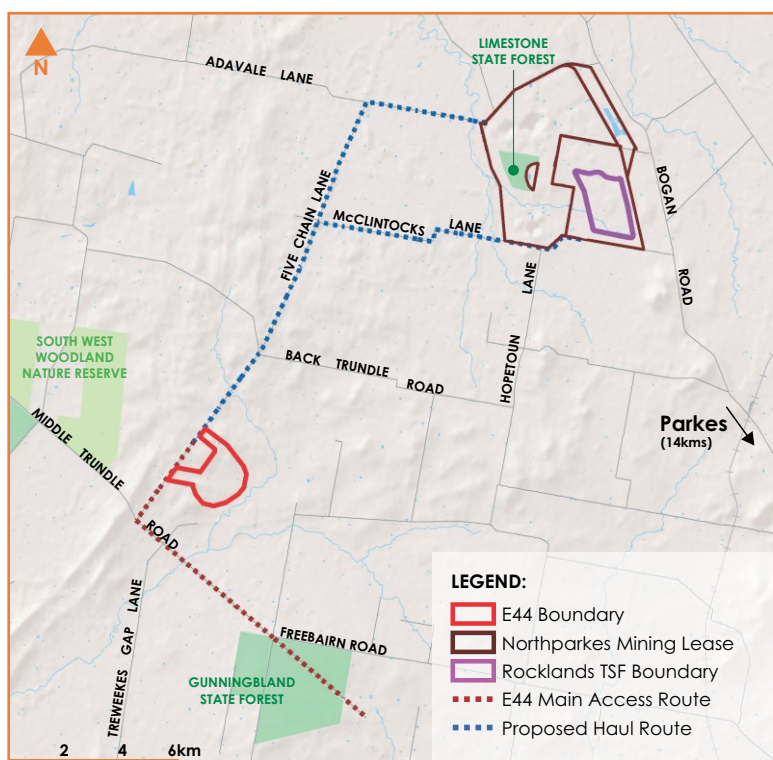
Option 1: Five Chain Lane onto Adavale Lane, entering Northparkes from the north west

2

Option 2: Five Chain Lane onto McClintocks Lane, entering Northparkes from the south



Construction of a new Tailings Storage Facility (Rocklands TSF).



PROJECT OVERVIEW

What approvals will be required and what is to be assessed?

The Northparkes E44 Rocklands Project will require development consent under the *NSW Environmental Planning and Assessment Act 1979* (EP&A Act) and may also require approval under the *Commonwealth Environment Protection and Biodiversity Conservation Act 1999* (EPBC Act).

The development application will be accompanied by a detailed Environmental Impact Statement (EIS), which will include numerous studies identifying both environmental and social impacts of the Northparkes E44 Rocklands Project. The detailed design will be informed by these studies to ensure that impacts are minimised and managed as far as reasonably and feasibly possible.

A detailed Social Impact Assessment (SIA) will be prepared as part of the EIS and in line with the NSW Department of Planning, Industry and Environment (DPIE) *Social Impact Assessment Guideline* (2021). Northparkes have engaged Umwelt to independently prepare these assessments.

How can you get involved?

Northparkes is seeking your input into the Project's planning and assessment process through our ongoing community engagement program as well as through additional consultation as part of the SIA. Over the coming months, Northparkes and Umwelt will be reaching out to nearby residents, community groups and key stakeholders across the region.

Contact Information

If you would like to know more about the Project or be involved in the community engagement program, please contact Gabe Albert, Community and External Relations Advisor.



Gabe Albert

Community and External
Relations Advisor

p. 0400 320 543

e. gabe.albert@au.cmoc.com

Matthew Burkitt

Farm Specialist

p. 0427 981 513

e. matthew.burkitt@au.cmoc.com



Northparkes Mines
A century of mining together

www.northparkes.com